



**Title:**

Political Engagement™

**Genre:**

Romantic/Comedy

**Tagline:**

Sometimes in love when you fake it, you can make it. Happen!

**Logline:**

A divorced, womanizing Mayor enlists the aid of his ex-wife, in his plan to fake an engagement, to win his election for U.S Senate.

**Synopsis:**

Jeff Palmer, a handsome yet divorced Mayor of Atlanta, discovers that his womanizing ways has caused him to lose favor with voters. He assembles his campaign and city staff to come up with a plan. After hours of meetings, the only plan worth exploring is to enlist the aid of his ex-wife, Catherine Mason, an up-and-coming Georgia attorney, who needs Washington D.C. contacts to obtain her very elusive life-long dream of becoming a federal judge, to fake an engagement.

After announcing the engagement on national television, the two must keep it together as they deceive pesky reporters, an overzealous private investigator sent by his opponent, and Jeff's sexy girlfriend, all trying to uncover the truth.

They spend time as a family and old feelings begin to surface after their son is injured in a car accident. It is short lived as they are split apart after pictures of Jeff and his ex-girlfriend surface in the media. Putting emotions aside both set out to complete the task of faking the engagement and achieve their goal of winning the election and becoming a federal judge.

Soon after their political goals are achieved Jeff and Catherine part ways, only to meet again two years later, with the help of their personal aids. Both noticeably have feelings for one another as they stroll into their destiny.

**TWO BROTHERS ENTERTAINMENT, LLC.**

Corporate Office: 3044 Pine Valley \* New Braunfels, TX 78130 \* (830) 221-5220

Midwest Office: 7327 Badger Court Suite #D \* Indianapolis, IN 46260 \* (317) 682-7271

[info@twobrothersproductions.com](mailto:info@twobrothersproductions.com)



# POLITICAL ENGAGEMENT PROJECT PLAN

---

“SOMETIMES IN LOVE, WHEN YOU FAKE IT,  
YOU CAN MAKE IT. HAPPEN!”

The motion picture industry is a highly complex and competitive business involving both creative and commercial considerations for which both substantial risks and high rates of return are associated.

It consists of two principal activities – production, which involves the financing, development and production of motion pictures, and distribution, which involves the promotion and exhibition of completed motion pictures in a variety of media.

# POLITICAL ENGAGEMENT PROJECT PLAN

*“SOMETIMES IN LOVE, WHEN YOU FAKE IT, YOU  
CAN MAKE IT. HAPPEN!”*

---

## TABLE OF CONTENTS

---

A. Table of Contents .....	2
B. Executive Summary .....	3
C. Project Details .....	4
D. Market Research.....	5
E. Target Market and Positioning .....	6
F. Budget.....	7
G. Revenue Potential .....	8
H. Cash Flow.....	10
I. Distribution.....	10
J. Web Presence .....	11
K. Venue for Release .....	12
L. Casting .....	12
M. Crew .....	14
N. Schedule.....	14

# POLITICAL ENGAGEMENT PROJECT PLAN

*“SOMETIMES IN LOVE, WHEN YOU FAKE IT, YOU  
CAN MAKE IT. HAPPEN!”*

---

## EXECUTIVE SUMMARY

---

“Political Engagement™” is an \$8.1 million dollar motion picture project where a tried-and-true worldwide market for romantic comedies and an emerging domestic market for minority films intersect.

The target audiences for this film are viewers between the ages of 25 to 59, which make up 60% of the movie going public, according to the Motion Picture Association of America’s (MPAA) (2005) US Movie Attendance Study (p.2).

According to the MPAA (2005) report “U.S. Entertainment Industry: 2005 MPA Market Statistics” PG and PG-13 films accounted for 85% of 2005’s top 20 films furthermore, “Political Engagement™” does not contain any explicit sex scenes and contains a minimal amount of foul language; we expect the film will fall into the Motion Picture Association of America’s parameters for a PG-13 rating (p.14).

Upon completion and delivery of the motion picture, approximately one year after the start of pre-production, the licensing of both domestic and foreign right is anticipated, thereby imitating the picture’s revenue stream. Two Brothers Productions is actively seeking distribution from Lionsgate, Sony, or Fox Search Light to oversee distribution., which will insure that the picture will contain the key elements that will generate the greatest potential domestic and foreign market sales.

Two Brothers Productions, a Texas Limited Liability Corporation (LLC), will make and market the picture. Investor(s) will receive 80% of the revenue generated by the picture until the complete \$8.1 million investment is recouped. Thereafter, the investor(s) will receive 20% of the revenue generated by the picture in perpetuity. Motion pictures can and do generate revenue streams for extended periods of time, often 25 years or more.

# POLITICAL ENGAGEMENT PROJECT PLAN

*“SOMETIMES IN LOVE, WHEN YOU FAKE IT, YOU  
CAN MAKE IT. HAPPEN!”*

---

## PROJECT DETAILS

---

### GENRE

Romantic/Comedy

### TAGLINE

Sometimes in love, when you fake it, you can make it. Happen!

You'll never see politics or divorce the same way!

Engagements are not suppose to be so political!

### LOGLINE

A divorced Mayor enlists the aid of his ex-wife, in his plan to fake an engagement, to win his election for U.S Senate.

### SYNOPSIS

A very handsome yet divorced Mayor of Atlanta, who is in a very close campaign for U.S Senate, finds that his womanizing ways has caused him to loose favor with voters. In an effort to regain that favor and win the election he enlists the aid of his ex-wife, an up-and-coming Atlanta attorney, who needs Washington D.C. contacts to obtain her very elusive life-long dream of becoming a federal judge, in his plan to fake an engagement.

As they deceive annoying reporters, an overzealous private investigator sent by his campaign opponent, his current main squeeze, that was suppose to be on remote location shooting a movie, and sexy ex-girlfriends all trying to uncover the truth, they discover the love they believed they had lost, or do they?

### MAIN CHARACTERS

#### Jeff Palmer (Lead)

Jeff Palmer, a clean-cut, well-dressed, 38 year old, athletic type, who is a caring leader, able to draw people into a cause or action with his political but very personable demeanor, which allows him to govern and be loved, a rare personality.

#### Catherine Mason (Lead)

Catherine Mason, a beautiful, 38 year old, outgoing, and driven woman, who uses her cutting quick wit and winning smile to hide her pain.

#### Jason Palmer (Supporting)

Jason Palmer, a 16 year old, average, imaginative teenager, who uses his silence as his shell and hides his good looks behind baggy hip-hop caps and clothes.

# POLITICAL ENGAGEMENT PROJECT PLAN

*“SOMETIMES IN LOVE, WHEN YOU FAKE IT, YOU  
CAN MAKE IT. HAPPEN!”*

David Roads (Supporting)

David Roads, Jeff's 37 year old campaign manager, who is an average looking, likable and very intellectual man, he continuously appears to have averaged only two hours of sleep a night, but it never slows him down.

Bob (Tex) Jones (Supporting)

Bob (Tex) Jones, Jeff's Texas handsome, 42 year old Chief-of-Staff, who uses his self-disciplined and righteous persona to drive other to do the right thing, simultaneously earning, love and respect from those around him.

Chris Palmer (Supporting)

Chris Palmer, Jeff's 31 year old, strikingly good looking, brother and Deputy Mayor in charge of Economic Development, who strives to better himself and to achieve status, becoming, at times, consumed with sex and shameless self-promotion.

Emily Basel (Supporting)

Emily Basel, a 28 year old, smart woman, who uses her intelligence as her armor and hides her ravishing beauty behind wire-rimmed glasses, her lustrous hair, which constantly falls in front of her face, which is void of much makeup, and an the attitude of a college student.

---

## MARKET RESEARCH

---

The motion picture industry is one of the most exciting and informative businesses in the world. The US movie industry despite a 5.7% decline in 2005 still continues to generate \$8.99 billion in revenue and for the fourth straight year, domestic cumulative box office from all studios continues to hold near \$9 billion, according to the Motion Picture Association (MPAA) (2005, p.3)<sup>1</sup>. The same report noted, although down 7.9% from 2004 the worldwide box office reflected a 46% growth over 2000 and held steady at \$23.24 billion in 2005 (MPAA, 2005, p.5)<sup>2</sup>. The increase in the international markets can be attributed to strong box office growth in the international market. International box office continues to benefit from a weak US dollar and strong box office showings from both local and US product (MPAA, 2004, p.1)<sup>3</sup>. All of the international regions saw double-digit growth in 2004. Europe/Middle East/Africa (EMEA) and Asia-Pacific saw an increase of 53% and 44% respectively. Latin America's theatrical market has begun to recover from its decline in 2003 with a 14% increase in 2004 (MPAA, 2004, p.1)<sup>4</sup>.

---

<sup>1</sup> Motion Picture Association of America (MMPA), (2005). "U.S. Entertainment Industry: 2005 MPA Market Statistics"

<sup>2</sup> Ibid

<sup>3</sup> Motion Picture Association of America (MMPA), (2004). "Mpa Snapshot Report: 2004 International Theatrical Market"

<sup>4</sup> Ibid

# POLITICAL ENGAGEMENT PROJECT PLAN

*“SOMETIMES IN LOVE, WHEN YOU FAKE IT, YOU  
CAN MAKE IT. HAPPEN!”*

---

## TARGET MARKET AND POSITIONING

---

The early part of the 1900s, even as late as the 1960s divorce was taboo. Yet, now divorce is a very common part of today’s society. According to Divorce Magazine.com (2002) the Percentage of population that is married is 59%, down from 62% in 1990 and 72% in 1970<sup>5</sup>. Politics, once considered a noble and admirable career, is now commonly looked upon with distain and politicians viewed as thieves that will do anything to get elected or reelected, to included lie. According to a Gallup (2006) poll, Americans were asked “How much of the time do you think you can trust government in Washington to do what is right?”, 64% answered only some of the time<sup>6</sup>.

Political Engagement’s unique plot or concept merges both of these societal matters and pokes fun at the two critical issues of today, divorce and politics. While “Hitch” was positioned and aimed at guys for their insecurity with woman, Political Engagement will be aimed at those have experienced divorce and who still believe that love is possible in any situation, even between ex-spouses in the lying and deceitful world of politics, hence the title.

To arrive at a sound target market we reviewed U.S. marriage and divorce statistics data obtained from Divorce Magazine.com<sup>7</sup>.

Median age at first marriage:	Males: 26.9 Females: 25.3
Median age at first divorce:	Males: 30.5 Females: 29
Median age at second marriage:	Males: 34 Females: 32
Median age at second divorce:	Males: 39.3 Females: 37

*Table 1: Median age of divorce and marriage.*

As you can see in Table 1, the average age for American’s first marriage is 25.3 for females and 26.9 for males, with their first divorce coming around the age of 29 for females and 30 for males. Furthermore, in America most of all divorces and marriages occur before the age of 40 and the average age of voters in America is 46 (Lipscomb, 2005)<sup>8</sup>. Therefore, the target audiences for this film are viewers between the ages of 25 to 59, which make up 60% of the movie going public, according to the Motion Picture Association of America’s (MPAA) (2005) US Movie Attendance Study (p.2).

---

<sup>5</sup><http://www.divorcemag.com/statistics/statsUS.shtml>

<sup>6</sup> <http://poll.gallup.com/>

<sup>7</sup><http://www.divorcemag.com/statistics/statsUS.shtml>

<sup>8</sup> Lipscomb, T. (2005) “Why John Kerry Lost”, The New York Sun, January 7, 2005

# POLITICAL ENGAGEMENT PROJECT PLAN

*“SOMETIMES IN LOVE, WHEN YOU FAKE IT, YOU  
CAN MAKE IT. HAPPEN!”*

## BUDGET

Our company’s goal is to create great original movies within a \$10 million dollars budget. To do this we will use well-known b-list actors, with cameo appearances from a-list actors and commence principal filming with only needed crew. This will allow us to generate the expected profit margins wanted for such films.

A majority of the total project cost, \$8.1 million, is “above the line” cost, with talent accounting for close to \$2.2 million or 26% of the total project cost. Total production cost is \$1.9 million or 24% of the total project budget. Total postproduction and total other cost \$899 thousand, accounts for 11% of the total project budget. A more detailed budget is available upon request.

<b>Budget #:</b>	<b>PE-1001</b>	
<b>Total Budget:</b>	<b>\$8,100,000.00</b>	
<u>Acct No:</u>	<u>Category Description</u>	<u>Total</u>
1100	Story & Other Rights	778,695.00**
1200	Producers Unit	207,000.00
1300	Directors Unit	978,145.00
1400	Talent	2,164,942.00
1500	Travel/Living	1,100,000.00
	<b>TOTAL ABOVE-THE-LINE</b>	<b>\$5,130,182.00</b>
2000	Production Staff	308,544.00
2100	Extra Talent	58,885.00
2200	Art Direction	53,463.00
2500	Set Operations	321,262.00
2700	Set Dressing	152,032.00
2800	Property Department	89,704.00
2900	Picture Vehicles & Animals	38,935.00
3000	Wardrobe Department	161,544.00
3100	Makeup & Hair Department	127,093.00
3200	Lighting Operations	109,068.00
3300	Camera Operations	243,112.00
3400	Production Sound	82,090.00
3500	Transportation Department	73,688.00
3600	Location Expenses	80,654.00
3700	Production Film & Lab	3,120.00
4200	Stage / Facilities Expenses	4,995.00
	<b>TOTAL PRODUCTION</b>	<b>\$1,909,201.00</b>
4500	Editing	125,506.00

# POLITICAL ENGAGEMENT PROJECT PLAN

*“SOMETIMES IN LOVE, WHEN YOU FAKE IT, YOU  
CAN MAKE IT. HAPPEN!”*

5200	Post-Production Film/Lab	50,000.00
5300	Post-Production Sound	52,337.00
5400	Music	661,674.00
4900	Titles	10,000.00
	<b>TOTAL POST PRODUCTION</b>	<b>\$899,516.00</b>
6100	Insurance	75,000.00
6200	Legal Costs	25,000.00
6300	Publicity	0.00
6400	Miscellaneous	61,100.00
	<b>TOTAL POST OTHER</b>	<b>\$161,100.00</b>
	<b>GRAND TOTAL</b>	<b>\$8,100,000.00</b>

*Table 2: Proposed Budget.*

\*\*Script rights will be purchased from the owners.

---

## REVENUE POTENTIAL

---

We understand a film can be an extraordinarily risky and volatile endeavor; the upside potential for those feature films that achieve a theatrical release remains exceptionally high. This is why our company’s goal is to create great original movie concepts. Use well-known b-list actors, cameo roles for a-list actors, and commence principal filming with only needed crew. We believe this will keep total cost between 8 – 10 million dollars allowing us to generate the estimated profit returns wanted for such films.

As you can see in Table 3, US domestic box office revenue for motion pictures of this type have a wide range, from a high of \$177 million with the motion picture “Hitch”, to a low of \$11 million with “Breaking All the Rules”, each had minority lead actors.

<b>Similar Movie Title</b>	<b>Total US Box Office*</b>
Hitch	\$177 million
50 First Dates	\$120 million
How to Lose a Guy in 10 Days	\$105 million
The American President	\$65 million
The Wedding Planner	\$60 million
Breaking All The Rules	\$11 million
*These are only US Box office numbers; total sales numbers are often proprietary, though box office as a rule of thumb usually represents anywhere from 1/3 to 3/4 of the total revenue stream.	

*Table 3: Similar Movie Revenue*

Table 4 represents a realistic range of revenue projections for Political Engagement in domestic, and international theatrical release along with non-video and video/DVD markets.

# POLITICAL ENGAGEMENT PROJECT PLAN

*“SOMETIMES IN LOVE, WHEN YOU FAKE IT, YOU CAN MAKE IT. HAPPEN!”*

Projections were calculated using averages based the Motion Picture Association (MPAA) (2005, p.12)<sup>9</sup> averages for new film releases, standard distribution and licensing fees and comparing domestic and international revenue data from recent romantic comedy motion pictures with and without minority lead casts. We also took into account the state of the motion picture industry and the emerging domestic market for minority films, i.e. films with African American or other nationality lead actors.

Given most motion picture industry analysts predictions of continued growth in the domestic and foreign home video markets, we believe “Political Engagement” like other motion pictures of this type, will hold strong domestic theatrical, non-video/DVD and video/DVD revenue.

	No Release	Below Average	Average	Excellent
<b>US Theatrical Sales</b>				
Estimated Box Office Receipts	\$0.00	\$12,000,000	\$35,000,000	\$65,000,000
Less Exhibitor Share (52%)	\$0.00	\$(5,760,000)	\$(18,200,000)	\$(33,800,000)
Gross Film Rentals (GFR)	\$0.00	\$6,240,000	\$16,800,000	\$31,200,000
Less Non-deferred Distributor Fee (15%)	\$0.00	\$(936,000)	\$(2,520,000)	\$(4,680,000)
Less Prints and Advertising and Interest	\$0.00	\$(2,000,000)	\$(6,000,000)	\$(10,000,000)
<b>Total US Theatrical Proceeds</b>	<b>\$0.00</b>	<b>\$3,304,000</b>	<b>\$8,280,000</b>	<b>\$16,520,000</b>
<b>US Aftermarket Sales</b>				
<i>Non Video/DVD</i>				
Pay Cable, PPV, Network, TV, VOD	950,000	\$2,500,000	\$5,100,000	\$9,500,000
Less Distribution/License Fee (15%)	\$(142,500)	\$(375,000)	\$(765,000)	\$(1,425,000)
<b>Total Non Video/DVD</b>	<b>\$807,500</b>	<b>\$2,125,000</b>	<b>\$4,445,000</b>	<b>\$8,075,000</b>
<i>Video/DVD Markets</i>				
Home Video/DVD	\$1,200,000	\$14,000,000	\$45,000,000	\$70,000,000
Less Distribution/License Fee (15%)	\$(180,000)	\$(2,100,000)	\$(6,750,000)	\$(10,500,000)
<b>Total Video/DVD Markets</b>	<b>\$1,020,000</b>	<b>\$11,900,000</b>	<b>\$38,250,000</b>	<b>\$60,000,000</b>
<b>Gross Domestic Sales</b>	<b>\$2,150,000</b>	<b>\$22,740,000</b>	<b>\$66,900,000</b>	<b>\$110,700,000</b>
<b>Net US Summary</b>				
Total Theatrical Proceeds	\$0.00	\$3,304,000	\$8,280,000	\$16,520,000
Total Non Video/DVD	\$950,000	\$2,125,000	\$4,445,000	\$8,075,000
Total Video/DVD	\$1,200,000	\$11,900,000	\$38,250,000	\$60,000,000
<b>Total US Proceeds</b>	<b>\$1,970,000</b>	<b>\$17,329,000</b>	<b>\$50,975,000</b>	<b>\$84,595,000</b>

<sup>9</sup> New film releases gross on average \$38.1 million dollars. According to the Motion Picture Association of America (MPAA), (2005). “U.S. Entertainment Industry: 2005 MPA Market Statistics” report.

# POLITICAL ENGAGEMENT PROJECT PLAN

*“SOMETIMES IN LOVE, WHEN YOU FAKE IT, YOU CAN MAKE IT. HAPPEN!”*

<b>Foreign Markets</b>				
Aggregate Foreign Markets	\$350,000	\$670,000	\$2,500,000	\$5,500,000
Less Distribution/Licensing Fees (12.5%)	<b>\$(43,750)</b>	<b>\$(83,750)</b>	<b>\$(312,500)</b>	<b>\$(687,500)</b>
Less Non Budgeted Int'l Marketing Fees	<b>\$(20,000)</b>	<b>\$(20,000)</b>	<b>\$(20,000)</b>	<b>\$(20,000)</b>
<b>Total Foreign Market Proceeds</b>	<b>\$286,250</b>	<b>\$566,250</b>	<b>\$2,167,500</b>	<b>\$5,479,312</b>
<b>Worldwide Summary</b>				
Total Net US Proceeds	\$1,970,000	\$17,329,000	\$50,975,000	\$84,595,000
Foreign Market Proceeds	\$286,250	\$566,250	\$2,167,500	\$5,479,312
Less Collection Fee (.75%)	<b>\$(16,921)</b>	<b>\$(134,214)</b>	<b>\$(398,568)</b>	<b>\$(675,557)</b>
Gross Revenue	\$2,239,329	\$17,761,036	\$52,743,932	\$89,398,755
Less Negative Cost (Investment)	<b>\$(8,100,000)</b>	<b>\$(8,100,000)</b>	<b>\$(8,100,000)</b>	<b>\$(8,100,000)</b>
<b>Net Profit</b>	<b>\$(5,860,671)</b>	<b>\$9,661,036</b>	<b>\$44,643,932</b>	<b>\$81,298,755</b>
<b>ROI</b>	<b>(72.4%)</b>	<b>119.3%</b>	<b>551.2%</b>	<b>1003.7%</b>

Table 4: Political Engagement Revenue Projections

---

## CASH FLOW

---

Typically we can expect to receive a return on investment in about one year after the completion of principal filming. Approximately 80% of the theatrical revenues domestic and foreign should be received within the first twelve months of release.

In the video/DVD market sales normally beginning six months after the theatrical release of the film, therefore revenue is not expected to begin until seven months after the theatrical release of the film. The majority of the video/DVD revenue is received within the first twenty-four months of video release. Noting video/DVD recurring revenues will continue to be received for ten to twenty years or more after theatrical release.

The initial pay and network television markets are expected to open up approximately eighteen months after domestic theatrical release. The pay television market is expected to last about six months with all initial revenues occurring in that time period. We expect 80% of initial revenue from network television to occur within twenty-five to sixty month. Once again recurring revenues from pay and network television will continue to be received for ten to twenty years or more after theatrical release

Ancillary and other market revenues are ongoing and perpetual throughout out the films release.

---

## DISTRIBUTION

---

Two Brothers Productions is actively seeking distribution from Lionsgate, Sony, or Fox Search Light to oversee distribution. After “Political Engagement” is completed, it will be available for licensing to domestic theatrical exhibition, domestic cable/pay television, network television, syndicated television (i.e., local television stations), foreign theatrical exhibition, foreign cable/pay, domestic and

# POLITICAL ENGAGEMENT PROJECT PLAN

*“SOMETIMES IN LOVE, WHEN YOU FAKE IT, YOU  
CAN MAKE IT. HAPPEN!”*

foreign DVD/home video markets and other sources, such as music rights, airlines and other non-theatrical exhibition as well as various merchandising rights.

Since a good theatrical release of this film will drive the revenue for ancillary markets and foreign territories. The key to a profitable and successful distribution is a good trailer and to gain maximum advertising exposure.

The market for DVD's and videocassettes for home use continues to expand globally and this expands is likely to continue as the ownership and DVD/video playback units become even more widespread and portable. In fact, 88% of all US households have a video cassette recorder and 84% of all us homes have a DVD according to Motion Picture Association (MPAA) (2005, p.28)<sup>10</sup>, we expect “Political Engagement” to become available on DVD/video for consumer purchase approximately 6 month after initial theatrical release to optimize revenue returns.

In addition to the traditional distribution medias and markets described above, we will license the rights of non-theatrical uses to distributor who in turn make the film available to airline, hotels, school, oil rigs, public libraries, prisons, community groups, armed forces ships at sea and others, as well as the right to license the performance of musical works and sound recordings embodied in a motion picture, including public performance and sheet music publication.

“Political Engagement” is a political film about a person running for political office. With political campaigns come posters, t-shirts, caps, pens, door hangers, etc. We do plan to license to merchandisers for manufacture of products such as video games, toys, T-shirts, posters, political signs, caps, pens and other merchandise.

---

## WEB PRESENCE

---

One in five moviegoers who report seeing at least one movie in 2005 own/subscribe to four or more entertainment technologies and those who do see two more movies on average per year than the low tech households, as of August 2005 (MPAA, 2005, p.18)<sup>11</sup>. Studios have now found that web sites continue to generate awareness for a movie well after the theatrical release to promote ancillary markets. Sony's “Hitch” web sites continue to promote the movie and sell the videos and DVDs.

We currently own the domain names [jeffpalmer2008.com](http://jeffpalmer2008.com), [jeffpalmerforussenate.com](http://jeffpalmerforussenate.com), [politicalengagement.com](http://politicalengagement.com), and [politicalengagementthemovie.com](http://politicalengagementthemovie.com). We plan to create a campaign web site for the candidate Jeff Palmer and register the name “Jeff Palmer” on the ballot to actually run for

---

<sup>10</sup> According to the Motion Picture Association of America (MMPA), (2005). “U.S. Entertainment Industry: 2005 MPA Market Statistics” report.

<sup>11</sup> According to the Motion Picture Association of America (MMPA), (2005). “U.S. Entertainment Industry: 2005 MPA Market Statistics” report.

# POLITICAL ENGAGEMENT PROJECT PLAN

*“SOMETIMES IN LOVE, WHEN YOU FAKE IT, YOU  
CAN MAKE IT. HAPPEN!”*

US Senate. We believe this will create a marketing phenomenon and blur the lines between the movie and real life.

---

## VENUE FOR RELEASE

---

We consider the proper venue for release is a date somewhere just after Labor Day, but before Halloween, in a presidential election year. Typically, this is a lull in movie releases and the time when most Americans start to pay attention to national politics. This will insure maximum correlation with the environment of public perception and advertising and also aid in the overall projects profit potential.

---

## CASTING

---

We plan to use well-known actors to play the roles of Jeff and Catherine Palmer, and known actors for the supporting roles, all of who would be willing to take a reasonable salary with back-end participation. Using these actors will keep the “above the line” and total project cost down, while still adding to the credibility and marketability of the film. Letters of interest have been requested from these actors. A list of potential cast and letters of interest received are attached.

We also are actively seeking a-list actors to perform cameo walk-on roles as the Grandmother and Amy.

<b>Character</b>	<b>Proposed Actors</b>
JEFF PALMER	Taye Diggs, Morris Chestnut, Shemar Moore, Jamie Foxx, Mel Jackson, LL Cool J, Anthony Anderson, Mike Epps, Shawn Wayans
CATHERINE MASON	Christina Milian, LisaRaye, Shari Headley, Beyonce’ Knowles, Essence Atkins, Gabrielle Union, Nia Long, Kellita Smith, Tisha Campbell, Regina Hall
JASON PALMER	Bow Wow, Marcus Paulk, Jeremy Suarez
CHRIS PALMER	D.B. Woodside, Miguel Nunez Jr., Kevin Hart (I), Duane Martin, Bill Bellamy, Eddie Steeples, Mike Epps
EMILY BASEL	Cast- Jennifer Sciole
TEX JONES	Josh Lucas, Lance Armstrong, Steve Austin, Jeff Foxworthy, Woody Harrelson, Matthew McConaughey, Bill Paxton
DAVID ROADS	Jonathan Silverman, Robert Carradine, Mike Binder, Justin Louis, David Spade, Steve Buschemi, Rob Schneider
SOFIA MARTINEZ	Jennnifer Esposito, Roselyn Sanchez, Sofia Vergara, Eva Longoria, Judy Reyes, Constance Marie, Masiela Lusha
THEODORE CHURCHILL	Kevin Grevioux, Terry Crews (I), Richard Brevard

# POLITICAL ENGAGEMENT PROJECT PLAN

*“SOMETIMES IN LOVE, WHEN YOU FAKE IT, YOU  
CAN MAKE IT. HAPPEN!”*

MADISON ALDERMAN	Keshia Knight Pulliam, K.D. Aubert, Angell Conwell, Jazmin Lewis, Dianna Miranda, Jennifer Freeman
ROBERT PEREZ	Art Bonilla, Adam Rodriguez (I), Jordi Caballero, Lou Diamond Phillips
CAMPAIGN MANAGER	Featured Extra
DICK	Featured Extra
JACK	Featured Extra
GOVERNOR	The Governor of The State
DEBBIE	Featured Extra
POLITICAL REPORTER	Featured Extra
POLITICAL REPORTER2	Featured Extra
ENTERTAINMENT REPORTER	Featured Extra
REPORTER1	Featured Extra
REPORTER2	Featured Extra
REPORTER3	Featured Extra
FRIEND1	Featured Extra
FRIEND2	Featured Extra
FRIENDS3	Featured Extra
DOORMAN	Featured Extra
MS. MORGAN	Featured Extra
MRS. GONZALEZ	Featured Extra
STAFFER	Featured Extra
SUSIE	Featured Extra
JOGGER	Featured Extra
MODERATOR	Featured Extra
LAU FINANCE MINISTER	Featured Extra
ENTOURAGE MEMBER	Featured Extra
GRANDMOTHER3	Featured Extra
GRANDMOTHER2	Featured Extra
GRANDMOTHER1	Cameo
GALE	Featured Extra
CINDY	Featured Extra
BAMBI	Featured Extra
AMY	Cameo
DRIVER	Featured Extra
DR. CAVORT	Featured Extra
DOCK SUPERVISOR	Featured Extra
DIRECTOR	Featured Extra

# POLITICAL ENGAGEMENT PROJECT PLAN

*“SOMETIMES IN LOVE, WHEN YOU FAKE IT, YOU  
CAN MAKE IT. HAPPEN!”*

*Table 5: Proposed Actors*

## CREW

The filmmakers are at present the writers and producers of the project. They will, at their discretion, have the opportunity to give points away to the non-investor members of the production team (director, line producer, cinematographer, etc.). Based on the budget the points can be used as incentive or reward for effort and/or deferred payments. The remaining crew will be hired in pre-production.

## SCHEDULE

While our principal shooting schedule is fluid and subject to change due to funding, we do anticipate starting principal shooting in May of 2007. Principal filming must take place before August of 2007 to meet the political marketing deadlines. Once principal filming begins we expect production to last eight to twelve weeks.

Below you will see the projects pre-production protocol. This protocol is based on an eight-week pre-production schedule.

<b>WEEK 1</b>	
Start Crew:	To Do:
Director's Contract	Set up Production Offices
Hire Director of Photography	Finalize Budget and Shooting Scripts
Hire Casting Director	Prepare Union and Guild Signatory Papers
Hire Production Accountant	Establish Insurance Coverage
Hire Location Manager (If needed some location and permissions have been tentatively obtained)	Begin Casting Supporting Roles
Hire 1 <sup>st</sup> Assistant Director	Production Meeting at End of the Week
<b>WEEK 2</b>	

# POLITICAL ENGAGEMENT PROJECT PLAN

*“SOMETIMES IN LOVE, WHEN YOU FAKE IT, YOU  
CAN MAKE IT. HAPPEN!”*

Start Crew:	To Do:
Hire Production Designer	Start Music Clearance of Masters and Publishing
	Production Meeting at End of the Week
<b>WEEK 3:</b>	
Start Crew:	To Do:
Hire Set Designer	Production Meeting at End of the Week
Hire Production Coordinator	
Hire Assistant Location Manager (If needed some location and permissions have been tentatively obtained)	
<b>WEEK 4</b>	
Start Crew:	To Do:
Hire Costume Designer	Production Meeting at End of the Week
Hire Transportation and Lodging Coordinator	
Hire Property Master	
Hire Set Decorator (and dressers)	
Recruit or Hire Production Assistants	
<b>WEEK 5</b>	
Start Crew:	To Do:

# POLITICAL ENGAGEMENT PROJECT PLAN

*“SOMETIMES IN LOVE, WHEN YOU FAKE IT, YOU  
CAN MAKE IT. HAPPEN!”*

Hire Assistant Account (if needed)	Production Meeting at End of the Week
Hire Wardrobe	Prepare for Construction Coordinator (if needed)
Hire Assistant Props	Prepare for Special Effects Crew (if needed)
<b>WEEK 6</b>	
Start Crew:	To Do:
Hire 2 <sup>nd</sup> Assistant Director	Production Meeting at End of the Week
Hire Transportation Captain	
Hire Swing Crew	
<b>WEEK 7</b>	
Start Crew:	To Do:
Hire Key Grips	Production Meeting at End of the Week
Hire Gaffer	Finalize Locations
Extras Casting	Order all Equipment, Film stock, expendables
<b>WEEK 8</b>	
Start Crew:	To Do:
Hire Script Supervisor	Production Meeting at End of the Week
Hire Caterer	Post Bond with Screen Actors Guild office
Hire Best Boy, Electric	Send out Casting Contracts
Hire Best Boy, Grip	Complete Crew Scouts with Director of Photography

# POLITICAL ENGAGEMENT PROJECT PLAN

*“SOMETIMES IN LOVE, WHEN YOU FAKE IT, YOU  
CAN MAKE IT. HAPPEN!”*

Hire Hair Stylist	Order any remaining Equipment, Film stock, expendables
Hire Make-up Artist	
Hire 1 <sup>st</sup> Assistant Cameraman	
Hire Sound Mixer	
Hire Production Van Driver	
Recruit Additional Production Assistants	
Recruit Additional Drivers	
<b>WEEK 9</b>	
	To Do:
	Start Principal Photography

*Table 6: Pre-production Protocol Schedule*

Acct No	Description	Amount	Units	X	Curr	Rate	Subtotal	Total
1100 STORY - RIGHTS & CONTINUITY								
1106	RIGHTS PURCHASED							
	Purchase Screenplay Rights From Gregory Parker	1	FLAT	1		350,000	\$350,000	
	Purchase Screenplay Right From Christopher Park	1	FLAT	1		350,000	\$350,000	
	Total							\$700,000
1109	WRITERS							
	Writer for Screenplay re-writes	1	FLAT	1		50,000	\$50,000	
	Total							\$50,000
1124	RESEARCH							
	Research Script re-writes, tec..	1	DAY	2		2,000	\$4,000	
	Total							\$4,000
1150	SCRIPT PHOTOCOPY							
	Script Copies	1	FLAT	80		10.0	\$800	
	Total							\$800
1196	OTHER COSTS							
	General Office Expences	1	FLAT	1		10,000	\$10,000	
	Writer Expences	1	FLAT	1		10,000	\$10,000	
	Total							\$20,000
1199	Total Fringes							
	FICA	6.2%				50,000	3,100	
	FUI	1.45%				50,000	725	
	Union Benefits	0.14%				50,000	70	\$3,895
Account Total for 1100								\$778,695
1200 PRODUCER'S UNIT								
1203	EXECUTIVE PRODUCER							
	Gregory Parker's Fee	1	FLAT	1		1,000	\$1,000	
	Chris Parker's Fee	1	FLAT	1		1,000	\$1,000	
	Total							\$2,000
1206	PRODUCER							
	Producers Finders Fees	4	FLAT	1		50,000	\$200,000	
	Total							\$200,000
1242	LEGAL & AUDITING							
	Legal Fees	1	HOUR	10		300	\$3,000	
	Total							\$3,000
1296	OTHER COSTS							
	Pagaging Fees	1	FLAT	1		1,000	\$1,000	
	Reimbursements	1	FLAT	1		1,000	\$1,000	
	Total							\$2,000
Account Total for 1200								\$207,000
1300 DIRECTION								
1303	DIRECTOR							
	Director Salary	1	WEEK	27		33,000	\$891,000	
	Total							\$891,000
1315	DIRECTOR'S ASSISTANT							
	Director's Assistant	1	WEEK	27		2,000	\$54,000	
	Total							\$54,000
1396	OTHER COSTS							

Continuation of Account 1396

Acct No	Description	Amount	Units	X	Curr	Rate	Subtotal	Total
	Office Expenses	1	FLAT	1		5,000	\$5,000	
	Contingencies	1	FLAT	1		4,000	\$4,000	
	Total							\$9,000
1399	Total Fringes							
	FICA	6.2%				144,000	8,928	
	FUI	1.45%				945,000	13,703	
	DGA Union Benefits	0.17%				891,000	1,515	\$24,145
Account Total for 1300								\$978,145
1400 CAST								
1403	STARS & LEADS							
	Lead Jeff Palmer	1	WEEK	12		40,000	\$480,000	
	Lead Catherine Mason	1	WEEK	12		40,000	\$480,000	
	Total							\$960,000
1415	SUPPORTING CAST							
	Supporting Sctors	6	WEEKS	12		10,000	\$720,000	
	Child Actor	1	DAY	5		5,000	\$25,000	
	Total							\$745,000
1418	DAY PLAYERS							
	Day Players	34	DAYS	70		122	\$290,360	
	Total							\$290,360
1430	LOOPING - ALL COSTS							
	Looping and Revoicing Allowance	2	DAYS	5		500	\$5,000	
	Total							\$5,000
1454	CASTING DIRECTOR							
	Casting Director	1	FLAT	3		2,000	\$6,000	
	Total							\$6,000
1460	CASTING EXPENSES							
	Casting Calls with Local Agency	1	DAY	5		2,000	\$10,000	
	Office Expence and Miscellaneous	1	FLAT	1		3,000	\$3,000	
	Total							\$13,000
1471	CAMEO STAR COSTS							
	Cameo Role of Amy	1	DAY	3		10,000	\$30,000	
	Airfare	1	FLAT	2		1,500	\$3,000	
	Hotel	1	DAY	3		1,000	\$3,000	
	Per Diem	1	FLAT	3		350	\$1,050	
							\$37,050	
	Camor Role of the Grandmother	1	DAY	3		10,000	\$30,000	
	Airfare	1	FLAT	2		1,500	\$3,000	
	Hotel	1	DAY	3		1,000	\$3,000	
	Per Diem	1	FLAT	3		350	\$1,050	
							\$37,050	
	Total							\$74,100
1496	OTHER COSTS							
		1	FLAT	1		20,000	\$20,000	
	Total							\$20,000
1499	Total Fringes							
	FICA	6.2%				369,100	22,884	
	FUI	1.45%				1,779,100	25,797	
	Union Benefits	0.14%				745,000	1,043	
	DGA Union Benefits	0.17%				1,034,100	1,758	\$51,482

Acct No	Description	Amount	Units	X	Curr	Rate	Subtotal	Total
Account Total for 1400								\$2,164,942
<b>1500 TRAVEL &amp; LIVING</b>								
1512	PRODUCERS' TRAVEL							
	Executive Producers Hotel	2	WEEKS	23		1,100	\$50,600	\$121,400
	Executive Producers Rent-A-Car	2	WEEKS	23		1,000	\$46,000	
	Executive Producers Airfare	2	FLAT	2		1,100	\$4,400	
	Other Producers Hotel	2	DAYS	5		1,000	\$10,000	
	Other Producers Rent-A-Car	2	DAYS	5		600	\$6,000	
	Other Producers Airfare	2	FLAT	2		1,100	\$4,400	
	Total							
1518	PRODUCERS' PER DIEM							
	Executive Producers Meals	2	WEEKS	23		1,000	\$46,000	\$49,500
	Other Producers Meals	2	DAYS	5		350	\$3,500	
	Total							
1521	DIRECTOR'S TRAVEL							
	Hotel	2	WEEKS	23		1,500	\$69,000	\$84,900
	Airfare	2	FLAT	2		1,100	\$4,400	
	Rent-A-Car	1	WEEK	23		500	\$11,500	
	Total							
1527	DIRECTOR'S PER DIEM							
	Meals	2	WEEKS	23		2,000	\$92,000	\$92,000
	Total							
1530	CAST TRAVEL							
	Lead Airfare	2	FLAT	6		1,100	\$13,200	\$181,600
	Lead Hotel	2	WEEKS	12		1,100	\$26,400	
	Airline	10	FLAT	2		1,100	\$22,000	
	Hotel	10	WEEKS	12		1,000	\$120,000	
	Total							
1536	CAST PER DIEM							
	Leads Meals	12	WEEKS	4		2,000	\$96,000	\$372,000
	Other Cast Meals	12	WEEKS	23		1,000	\$276,000	
	Total							
1596	OTHER COSTS							
	Contingences	1	FLAT	1		100,000	\$100,000	\$100,000
	Total							
Account Total for 1500								\$1,001,400
TOTAL ABOVE-THE-LINE COSTS								\$5,130,182
<b>2000 PRODUCTION STAFF</b>								
2001	PRODUCTION MANAGER							
	Salary	1	WEEK	15		2,800	\$42,000	\$42,000
	Total							
2010	1st ASSISTANT DIRECTOR							
	Salary	1	WEEK	15		2,500	\$37,500	\$37,500
	Total							
2011	2nd ASSISTANT DIRECTOR							
	Salary	1	WEEK	12		2,400	\$28,800	\$28,800
	Total							
2019	SCRIPT SUPERVISOR							
	Salary	1	WEEK	12		1,800	\$21,600	

Continuation of Account 2019

Acct No	Description	Amount	Units	X	Curr	Rate	Subtotal	Total
	Total							\$21,600
2021	LOCATION MANAGER							
	Salary	1	WEEK	12		2,310	\$27,720	
	Total							\$27,720
2023	LOCATION SCOUTS							
	Location Scouting Fees	1	FLAT	1		5,000	\$5,000	
	Total							\$5,000
2025	PRODUCTION ASSISTANTS							
	Local Production Asst's	5	WEEKS	12		300	\$18,000	
	Total							\$18,000
2031	PRODUCTION ACCOUNTANT							
	Salary	1	WEEK	14		1,600	\$22,400	
	Total							\$22,400
2036	PAYROLL ACCOUNTANT							
	Salary	1	WEEK	14		1,600	\$22,400	
	Total							\$22,400
2045	TRAVEL COORDINATOR							
	Salary	1	WEEK	23		980	\$22,540	
	Total							\$22,540
2046	OFFICE PRODUCTION ASSTS							
	Salary	1	WEEK	13		980	\$12,740	
	Total							\$12,740
2078	PRODUCTION STAFF COMPUTER RENTALS							
	Computer Rentals	3	FLAT	13		100	\$3,900	
	Total							\$3,900
2080	ACCOUNTING COMPUTER RENTALS							
	Computer Rentals	2	WEEKS	13		100	\$2,600	
	Total							\$2,600
2090	PURCHASES							
	Accounting Software	1	FLAT	1		2,500	\$2,500	
	Total							\$2,500
2094	CAR EXPENSES / ALLOWANCES							
	Location Manager Mileage Allowance	1	ALLOW	1		4,000	\$4,000	
	Other Mileage Allowances	1	FLAT	1		10,000	\$10,000	
	Total							\$14,000
2096	OTHER COSTS							
	General Office Expences	1	FLAT	1		5,000	\$5,000	
	Total							\$5,000
2099	Total Fringes							
	FICA	6.2%				255,700	15,853	
	FUI	1.45%				255,700	3,708	
	Union Benefits	0.14%				202,420	283	\$19,844
Account Total for 2000								\$308,544
2100 EXTRA TALENT								
2102	EXTRAS COORDINATOR							
	Salary	1	WEEK	12		980	\$11,760	
	Total							\$11,760
2103	EXTRAS - UNION							
	Extras Union	15	DAYS	10		122	\$18,300	
	Total							\$18,300
2106	EXTRAS - NON-UNION							

Continuation of Account 2106

Acct No	Description	Amount	Units	X	Curr	Rate	Subtotal	Total
	Extra Non-Union	15	DAYS	10		50	\$7,500	
	Total							\$7,500
2133	SIDELINE MUSICIANS							
	Orchestra/Band	1	DAY	5		400	\$2,000	
	Total							\$2,000
2151	WET / SMOKE ALLOWANCE							
	Rain	1	DAY	4		1,000	\$4,000	
	Total							\$4,000
2154	CASTING FEE							
	Casting Company Fees	1	FLAT	1		10,000	\$10,000	
	Total							\$10,000
2196	OTHER COSTS							
	Contingencies	1	FLAT	1		3,000	\$3,000	
	Total							\$3,000
2199	Total Fringes							
	FICA	6.2%				30,060	1,864	
	FUI	1.45%				30,060	436	
	Union Benefits	0.14%				18,300	26	\$2,325
Account Total for 2100								\$58,885
2200 SET DESIGN								
2203	PRODUCTION DESIGNER							
	Salary	1	WEEK	15		2,750	\$41,250	
	Total							\$41,250
2290	EQUIPMENT							
	Rental Allowance	1	WEEK	2		500	\$1,000	
	Purchase Allowance	1	FLAT	1		4,000	\$4,000	
	Total							\$5,000
2294	CAR EXPENSES / ALLOWANCES							
	Mileage Allowance	1	FLAT	1		2,000	\$2,000	
	Total							\$2,000
2296	OTHER COSTS							
	Contingencies	1	FLAT	1		2,000	\$2,000	
	Total							\$2,000
2299	Total Fringes							
	FICA	6.2%				41,250	2,558	
	FUI	1.45%				41,250	598	
	Union Benefits	0.14%				41,250	58	\$3,213
Account Total for 2200								\$53,463
2500 SET OPERATIONS								
2503	KEY GRIP							
	Salary	1	WEEK	12		2,078	\$24,936	
	Total							\$24,936
2506	2nd COMPANY GRIP							
	Salary	1	WEEK	12		1,700	\$20,400	
	Total							\$20,400
2509	DOLLY GRIP							
	Salary	2	WEEKS	12		1,600	\$38,400	
	Total							\$38,400
2521	GRIP RIGGING LABOR							
	Salary	2	WEEKS	12		1,400	\$33,600	

Continuation of Account 2521

Acct No	Description	Amount	Units	X	Curr	Rate	Subtotal	Total
	Total							\$33,600
2536	CRAFTSERVICE LABOR							
	Forman Salary	1	WEEK	15		1,499	\$22,485	
	Service Person(s) Salary	2	WEEKS	12		1,100	\$26,400	
	Total							\$48,885
2545	1st AID LABOR							
	Nurses, First Aid	1	WEEK	12		1,400	\$16,800	
	Total							\$16,800
2548	SET SECURITY							
	Officers/Guards	3	WEEKS	13		1,000	\$39,000	
	Total							\$39,000
2551	CRANE RENTALS							
	Crane Rental Allowance	1	WEEK	12		1,000	\$12,000	
	Total							\$12,000
2554	DOLLY RENTALS							
	Dolly Rental Allowance	2	WEEKS	12		1,000	\$24,000	
	Total							\$24,000
2557	CRAFT SERVICE SUPPLIES							
	Craft Services Allowance	1	FLAT	1		40,000	\$40,000	
	Total							\$40,000
2594	CAR EXPENSE / ALLOWANCES							
	Mileage Allowance	1	FLAT	1		6,000	\$6,000	
	Total							\$6,000
2599	Total Fringes							
	FICA	6.2%				222,021	13,765	
	FUI	1.45%				222,021	3,219	
	Union Benefits	0.14%				183,021	256	\$17,241
Account Total for 2500								\$321,262
2700 SET DRESSING								
2703	SET DECORATOR							
	Salary	1	WEEK	15		1,500	\$22,500	
	Total							\$22,500
2706	LEADPERSON							
	Salary	1	WEEK	12		1,300	\$15,600	
	Total							\$15,600
2715	LOCAL HIRE SWING GANG							
	Local Gang	5	WEEKS	13		500	\$32,500	
	Total							\$32,500
2745	SET DRESSING CLEANING							
	Maid Services	1	WEEK	15		1,000	\$15,000	
	Total							\$15,000
2790	PURCHASES							
	Purchase Allowance	1	FLAT	1		50,000	\$50,000	
	Total							\$50,000
2791	RENTALS							
	Rental Allowance	1	FLAT	1		10,000	\$10,000	
	Total							\$10,000
2794	CAR EXPENSES / ALLOWANCES							
	Car Allowance	1	FLAT	1		2,000	\$2,000	
	Total							\$2,000
2799	Total Fringes							

Acct No	Description	Amount	Units	X	Curr	Rate	Subtotal	Total
	FICA	6.2%				70,600	4,377	
	FUI	1.45%				70,600	1,024	
	Union Benefits	0.14%				22,500	32	\$5,432
Account Total for 2700								\$153,032
<b>2800 PROPERTY</b>								
2803	PROPERTY MASTER							
	Salary	1	WEEK	15		2,100	\$31,500	
	Total							\$31,500
2806	ASST PROPERTY MASTER							
	Salary	1	WEEK	15		1,840	\$27,600	
	Total							\$27,600
2822	SPECIAL PROPS							
	Special Props Allowance	1	FLAT	1		3,000	\$3,000	
	Total							\$3,000
2890	PURCHASES							
	Purchase Allowance	1	FLAT	1		10,000	\$10,000	
	Total							\$10,000
2891	RENTALS							
	Rental Allowance	1	FLAT	1		10,000	\$10,000	
	Total							\$10,000
2894	CAR EXPENSES / ALLOWANCES							
	Car Mileage Allowance	1	FLAT	1		3,000	\$3,000	
	Total							\$3,000
2899	Total Fringes							
	FICA	6.2%				59,100	3,664	
	FUI	1.45%				59,100	857	
	Union Benefits	0.14%				59,100	83	\$4,604
Account Total for 2800								\$89,704
<b>2900 PICTURE VEHICLES &amp; ANIMALS</b>								
2909	ANIMAL HANDLERS							
	Salary	1	WEEK	2		1,500	\$3,000	
	Total							\$3,000
2912	ANIMALS							
	Dogs	2	WEEKS	2		2,000	\$8,000	
	Total							\$8,000
2915	VETERINARY EXPENSE							
	Exams	1	FLAT	2		3,000	\$6,000	
	Total							\$6,000
2924	PICTURE CAR DRIVERS							
	Salary	6	WEEKS	3		500	\$9,000	
	Total							\$9,000
2930	PICTURE VEHICLES							
	Police Car Rental	2	WEEKS	3		1,000	\$6,000	
	GMC Suburbans (Black)	2	WEEKS	3		1,000	\$6,000	
	Total							\$12,000
2999	Total Fringes							
	FICA	6.2%				12,000	744	
	FUI	1.45%				12,000	174	
	Union Benefits	0.14%				12,000	17	\$935
Account Total for 2900								\$38,935

Acct No	Description	Amount	Units	X	Curr	Rate	Subtotal	Total
<b>3000 WARDROBE</b>								
3003	COSTUME DESIGNER							
	Salary	1	WEEK	12		2,000	\$24,000	\$24,000
	Total							
3015	COSTUME SUPERVISORS							
	Costume Sup (Male)	1	WEEK	12		1,650	\$19,800	\$39,600
	Costume Sup (Female)	1	WEEK	12		1,650	\$19,800	
	Total							
3036	ALTERATIONS & REPAIRS							
	Alterations Allowance	1	FLAT	1		8,000	\$8,000	\$8,000
	Total							
3039	CLEANING							
	Cleaning Allowance	1	FLAT	1		10,000	\$10,000	\$10,000
	Total							
3090	PURCHASES							
	Purchases Allowance	1	FLAT	1		50,000	\$50,000	\$50,000
	Total							
3091	RENTALS							
	Rental Allowance	1	FLAT	1		20,000	\$20,000	\$20,000
	Total							
3094	CAR EXPENSES / ALLOWANCES							
	Car Mileage Allowance	1	FLAT	1		5,000	\$5,000	\$5,000
	Total							
3099	Total Fringes							
	FICA	6.2%				63,600	3,943	\$4,954
	FUI	1.45%				63,600	922	
	Union Benefits	0.14%				63,600	89	
Account Total for 3000								\$161,554
<b>3100 MAKEUP &amp; HAIRDRESSING</b>								
3103	KEY HAIR STYLIST							
	Salary	1	WEEK	12		1,767	\$21,204	\$21,204
	Total							
3106	HAIR STYLIST							
	Salary	2	WEEKS	12		1,567	\$37,608	\$37,608
	Total							
3121	KEY MAKE-UP ARTIST							
	Salary	1	WEEK	12		2,035	\$24,420	\$24,420
	Total							
3124	MAKE-UP ARTISTS							
	Salary	1	WEEK	12		1,730	\$20,760	\$20,760
	Total							
3190	MAKEUP PURCHASES							
	Makeup Allowance	1	FLAT	1		10,000	\$10,000	\$10,000
	Total							
3194	CAR EXPENSE / ALLOWANCES							
	Car Mileage Allowance	1	FLAT	1		5,000	\$5,000	\$5,000
	Total							
3199	Total Fringes							
	FICA	6.2%				103,992	6,448	
	FUI	1.45%				103,992	1,508	

Acct No	Description	Amount	Units	X	Curr	Rate	Subtotal	Total
	Union Benefits	0.14%				103,992	146	\$8,101
Account Total for 3100								\$127,093
<b>3200 LIGHTING</b>								
3203	GAFFER							
	Salary	1	WEEK	12		2,078	\$24,936	
	Total							\$24,936
3215	ADDITIONAL LABOR							
	Lighting Labor	2	WEEKS	12		960	\$23,040	
	Total							\$23,040
3224	RIGGING GAFFER							
	Salary	1	WEEK	12		1,873	\$22,476	
	Total							\$22,476
3248	GAS & OIL FOR GENERATORS							
	Gas & Oil Allowance	1	FLAT	1		4,000	\$4,000	
	Total							\$4,000
3291	EQUIPMENT RENTALS							
	Lighting Equipment Rental Allowance	1	FLAT	1		15,000	\$15,000	
	Generator Rentals	2	WEEKS	12		350	\$8,400	
	Globes, Carbons, Expendable	4	WEEKS	12		120	\$5,760	
	Total							\$29,160
3299	Total Fringes							
	FICA	6.2%				70,452	4,368	
	FUI	1.45%				70,452	1,022	
	Union Benefits	0.14%				47,412	66	\$5,456
Account Total for 3200								\$109,068
<b>3300 CAMERA &amp; VIDEO</b>								
3303	DIRECTOR OF PHOTOGRAPHY							
	Salary	1	WEEK	12		2,900	\$34,800	
	Total							\$34,800
3312	ADDITIONAL CAMERA OPERATORS							
	Loaders	4	WEEKS	12		1,912	\$91,776	
	Total							\$91,776
3315	"A" CAMERA 1st ASSISTANT							
	Salary	1	WEEK	12		1,700	\$20,400	
	Total							\$20,400
3318	"B" CAMERA 1st ASSISTANT							
	Salary	1	WEEK	12		1,700	\$20,400	
	Total							\$20,400
3336	STILL PHOTOGRAPHER							
	Salary	1	DAY	10		345	\$3,450	
	Total							\$3,450
3391	EQUIPMENT RENTALS							
	Camera Rental Allowance	3	WEEKS	13		1,000	\$39,000	
	Crain Rental Allowance	1	WEEK	12		1,500	\$18,000	
	Steadicam Rental Allowance	1	WEEK	12		400	\$4,800	
	Total							\$61,800
3399	Total Fringes							
	FICA	6.2%				134,250	8,323	
	FUI	1.45%				136,026	1,972	
	Union Benefits	0.14%				136,026	190	\$10,486

Acct No	Description	Amount	Units	X	Curr	Rate	Subtotal	Total
Account Total for 3300								\$243,112
3400 PRODUCTION SOUND								
3403	SOUND MIXER							
	Salary	2	DAYS	55		270	\$29,700	
	Total							\$29,700
3406	BOOM OPERATOR							
	Salary	2	DAYS	55		338	\$37,180	
	Total							\$37,180
3490	PURCHASES							
	Sound Equipment Purchase Allowance	1	FLAT	1		5,000	\$5,000	
	Total							\$5,000
3491	RENTALS							
	Sound Equipment Rental Allowance	1	FLAT	1		5,000	\$5,000	
	Total							\$5,000
3499	Total Fringes							
	FICA	6.2%				66,880	4,147	
	FUI	1.45%				66,880	970	
	Union Benefits	0.14%				66,880	94	\$5,210
Account Total for 3400								\$82,090
3500 TRANSPORTATION								
3518	LOCAL HIRE DRIVERS							
	Drivers	3	WEEKS	4		750	\$9,000	
	Total							\$9,000
3536	LOCAL HIRE EQUIPMENT							
	Truck Rental Allowance	4	WEEKS	12		750	\$36,000	
	Total							\$36,000
3551	GAS, OIL & FUELS							
	Fuel Allowance	1	FLAT	1		10,000	\$10,000	
	Total							\$10,000
3557	TRAILER RENTAL & SUPPLIES							
	Equipment Trailer Rental Allowance	3	WEEKS	12		500	\$18,000	
	Total							\$18,000
3599	Total Fringes							
	FICA	6.2%				9,000	558	
	FUI	1.45%				9,000	130	\$688
Account Total for 3500								\$73,688
3600 LOCATION EXPENSES								
3603	TRANSPORTATION FARES							
	Airfare	2	FLAT	2		1,500	\$6,000	
	Total							\$6,000
3609	CREW PER DIEM							
	Meal Per Diem Allowance	1	FLAT	1		7,000	\$7,000	
	Total							\$7,000
3612	SITE RENTALS; FEES; PERMITS							
	Permit Allowance	1	FLAT	1		3,000	\$3,000	
	Site Rental Allowance	1	FLAT	1		16,000	\$16,000	
	Total							\$19,000
3615	SURVEY COSTS							

Continuation of Account 3615

Acct No	Description	Amount	Units	X	Curr	Rate	Subtotal	Total
	Photos/Scouts Allowance	1	FLAT	1		1,500	\$1,500	
	Total							\$1,500
3633	MISC. LOCAL EMPLOYEES							
	Teacher for Child Actor	1	DAY	5		300	\$1,500	
	Total							\$1,500
3681	CELL PHONE REIMBURSEMENT							
	Allowance	1	FLAT	1		6,000	\$6,000	
	Total							\$6,000
3691	RENTALS							
	Cast Trailer Rental Fee	4	WEEKS	12		350	\$16,800	
	Crew and Other Trailer Rental Fee	2	WEEKS	12		327.27	\$7,854	
	Total							\$24,654
3694	CAR EXPENSES / ALLOWANCES							
	Mileage Allowance	1	FLAT	1		15,000	\$15,000	
	Total							\$15,000
Account Total for 3600								\$80,654
3700 PRODUCTION FILM AND LABORATORY								
3796	OTHER COSTS							
	Extra Camera Harddrives	4	FLAT	1		780	\$3,120	
	Total							\$3,120
Account Total for 3700								\$3,120
4200 STAGE / FACILITIES EXPENSES								
4203	STAGE RENTALS							
	Stage	1	DAY	4		300	\$1,200	
	Total							\$1,200
4239	UTILITIES							
	Electricity	1	WEEK	23		110	\$2,530	
	Total							\$2,530
4245	TRASH REMOVAL							
	Trash Pickup	1	WEEK	23		55	\$1,265	
	Total							\$1,265
Account Total for 4200								\$4,995
TOTAL PRODUCTION COSTS								\$1,909,201
4500 FILM / TAPE EDITING								
4503	EDITORS							
	Salary	1	WEEK	15		3,000	\$45,000	
	Total							\$45,000
4587	EDITORIAL TRAVEL							
	AirFare	1	FLAT	1		1,100	\$1,100	
	Total							\$1,100
4588	EDITORIAL HOTEL							
	Hotel Fees	1	DAY	30		200	\$6,000	
	Total							\$6,000
4589	EDITORIAL PER DIEM							
	Rent-A-Car	1	DAY	30		100	\$3,000	
	Meals	1	DAY	30		230	\$6,900	
	Total							\$9,900

Acct No	Description	Amount	Units	X	Curr	Rate	Subtotal	Total
4597	STUDIO CHARGES							
	Rental Fees	1	DAY	30		2,000	\$60,000	
	Total							\$60,000
4599	Total Fringes							
	FICA	6.2%				45,000	2,790	
	FUI	1.45%				45,000	652	
	Union Benefits	0.14%				45,000	63	\$3,506
Account Total for 4500								\$125,506
4600 MUSIC								
4603	COMPOSERS							
	Salary	1	WEEK	12		5,000	\$60,000	
	Total							\$60,000
4660	RECORDING STOCK & MATERIALS							
	Stock Music	1	FLAT	1		25,000	\$25,000	
	Total							\$25,000
4696	OTHER COSTS							
	Cost Music Video's	2	FLAT	1		250,000	\$500,000	
	Total							\$500,000
4697	STUDIO CHARGES							
	Rental Fees	1	WEEK	12		6,000	\$72,000	
	Total							\$72,000
4699	Total Fringes							
	FICA	6.2%				60,000	3,720	
	FUI	1.45%				60,000	870	
	Union Benefits	0.14%				60,000	84	\$4,674
Account Total for 4600								\$661,674
4700 POST PRODUCTION SOUND								
4701	SUPERVISING SOUND EDITOR							
	Salary	1	WEEK	10		3,000	\$30,000	
	Total							\$30,000
4753	STOCK - DUB MASTER							
	Stock Sounds	1	FLAT	1		10,000	\$10,000	
	Total							\$10,000
4796	OTHER COSTS							
	Misc	1	FLAT	1		10,000	\$10,000	
	Total							\$10,000
4799	Total Fringes							
	FICA	6.2%				30,000	1,860	
	FUI	1.45%				30,000	435	
	Union Benefits	0.14%				30,000	42	\$2,337
Account Total for 4700								\$52,337
4800 POST PRODUCTION FILM & LAB								
4803	STOCK FOOTAGE							
	Fees	1	FLAT	10		2,000	\$20,000	
	Total							\$20,000
4818	INSERTS							
	Fees	1	FLAT	1		30,000	\$30,000	
	Total							\$30,000

Acct No	Description	Amount	Units	X	Curr	Rate	Subtotal	Total
Account Total for 4800								\$50,000
4900 TITLES								
4903	MAIN, OPENING & END TITLES							
	Titles	1	FLAT	1		10,000	\$10,000	
	Total							\$10,000
Account Total for 4900								\$10,000
TOTAL POST PRODUCTIN COSTS								\$899,516
6700 INSURANCE								
6703	CAST							
	Policy Cost Allowance	1	FLAT	1		25,000	\$25,000	
	Total							\$25,000
6712	PROPERTY FLOATER							
	Policy Cost Allowance	1	FLAT	1		25,000	\$25,000	
	Total							\$25,000
6715	OTHER INSURANCE CHARGES							
	General Liability	1	FLAT	1		25,000	\$25,000	
	Total							\$25,000
Account Total for 6700								\$75,000
6800 GENERAL EXPENSE								
6801	TELEPHONE - STUDIO							
	Line Cost & Installation Allowance	1	FLAT	1		5,000	\$5,000	
	Total							\$5,000
6811	POSTAGE							
	Postage Allowance	1	FLAT	1		8,000	\$8,000	
	Total							\$8,000
6814	OFFICE RENTALS							
	Rental Allowance	1	WEEK	23		1,000	\$23,000	
	Total							\$23,000
6815	OFFICE SUPPLIES							
	Office Supplies Allowance	1	FLAT	1		8,000	\$8,000	
	Total							\$8,000
6824	OFFICE EQUIPMENT RENTALS							
	Copier Rental	1	WEEK	12		300	\$3,600	
	Total							\$3,600
6833	OFFICE FURNITURE RENTAL							
	Rental Allowance	1	FLAT	1		3,000	\$3,000	
	Total							\$3,000
6836	WRAP PARTY							
	Wrap Party Allowance	1	FLAT	1		10,000	\$10,000	
	Total							\$10,000
6839	OFFICE REFRESHMENTS							
	Refreshment Allowance	1	FLAT	1		500	\$500	
	Total							\$500
6896	OTHER COSTS							
	Legal Fees	1	FLAT	1		25,000	\$25,000	
	Total							\$25,000
Account Total for 6800								\$86,100

Acct No	Description	Amount	Units	X	Curr	Rate	Subtotal	Total
TOTAL OTHER COSTS								\$161,100
	Total Above-The-Line							\$5,130,182
	Total Below-The-Line							\$2,969,818
	Total Above and Below-The-Line							\$8,100,000
	Grand Total							\$8,100,000

Acct No	Category Description	Page	Total
1100	STORY - RIGHTS & CONTINUITY	1	\$778,695
1200	PRODUCER'S UNIT	1	\$207,000
1300	DIRECTION	1	\$978,145
1400	CAST	2	\$2,164,942
1500	TRAVEL & LIVING	3	\$1,001,400
TOTAL ABOVE-THE-LINE COSTS			\$5,130,182
2000	PRODUCTION STAFF	3	\$308,544
2100	EXTRA TALENT	4	\$58,885
2200	SET DESIGN	5	\$53,463
2500	SET OPERATIONS	5	\$321,262
2700	SET DRESSING	6	\$153,032
2800	PROPERTY	7	\$89,704
2900	PICTURE VEHICLES & ANIMALS	7	\$38,935
3000	WARDROBE	8	\$161,554
3100	MAKEUP & HAIRDRESSING	8	\$127,093
3200	LIGHTING	9	\$109,068
3300	CAMERA & VIDEO	9	\$243,112
3400	PRODUCTION SOUND	10	\$82,090
3500	TRANSPORTATION	10	\$73,688
3600	LOCATION EXPENSES	10	\$80,654
3700	PRODUCTION FILM AND LABORATORY	11	\$3,120
4200	STAGE / FACILITIES EXPENSES	11	\$4,995
TOTAL PRODUCTION COSTS			\$1,909,201
4500	FILM / TAPE EDITING	11	\$125,506
4600	MUSIC	12	\$661,674
4700	POST PRODUCTION SOUND	12	\$52,337
4800	POST PRODUCTION FILM & LAB	12	\$50,000
4900	TITLES	13	\$10,000
TOTAL POST PRODUCTIN COSTS			\$899,516
6700	INSURANCE	13	\$75,000
6800	GENERAL EXPENSE	13	\$86,100
TOTAL OTHER COSTS			\$161,100
Total Above-The-Line			\$5,130,182
Total Below-The-Line			\$2,969,818
Total Above and Below-The-Line			\$8,100,000
Grand Total			\$8,100,000

## Budget Information Report

Budget Title	: Political Engagement Proposed Budget Detail	Total Number of Items
Budget Number	: PE1001	Categories : 40
Revision Number	: 2	Accounts : 694
		Details : 734
Currency		Fringes : 5
Base	: US United States 1.0	Globals : 0
Conversion	: US United States 1.0	Groups : 11
		Units : 8
Budget File		Locations : 2
Budget Template	: C:\Documents and Settings\Gregory Parker\EPData\EP Budgeting\Templates\SONY FEATURES TEMPLATE.ept	Sets : 1
Budget Data	: E:\Two Brothers Entertainment LLC\Project Documents\Political_Engagement\New Folder\Political Engagement.epb	Currencies : 2
Date Created	: Sun Apr 30, 2006 at 1:47 PM CDT	4th Level : 0
Date Last Updated	: Mon May 29, 2006 at 12:17 PM CDT	

## Remarks :

Our company's goal is to create great original movies within a \$10 million dollars budget. To do this we will use well-known b-list actors, with cameo appearances from a-list actors and commence principal filming with only needed crew. This will allow us to generate the expected profit margins wanted for such films.

A majority of the total project cost, \$8.1 million, is "above the line" cost, with talent accounting for close to \$2.2 million or 26% of the total project cost. Total production cost is \$1.9 million or 24% of the total project budget. Total postproduction and total other cost \$899 thousand, accounts for 11% of the total project budget. A more detailed budget is available upon request.

April 11, 2006

## Letter of Interest

Our client, Jennifer Sciole (hereinafter "Actor") hereby expresses interest in playing the role of Emily Basel in the film project of the working title Political Engagement under development by Two Brothers Productions (hereinafter "Producer") subject to Actor's availability and the future agreement to terms of employment between Actor and Producer. This letter does not bind either Producer or Actor to an employment contract, but grants Producer permission to use Actor's name and likeness in the pre-production development of this project and in seeking financing for this project, for a period not to exceed one year.

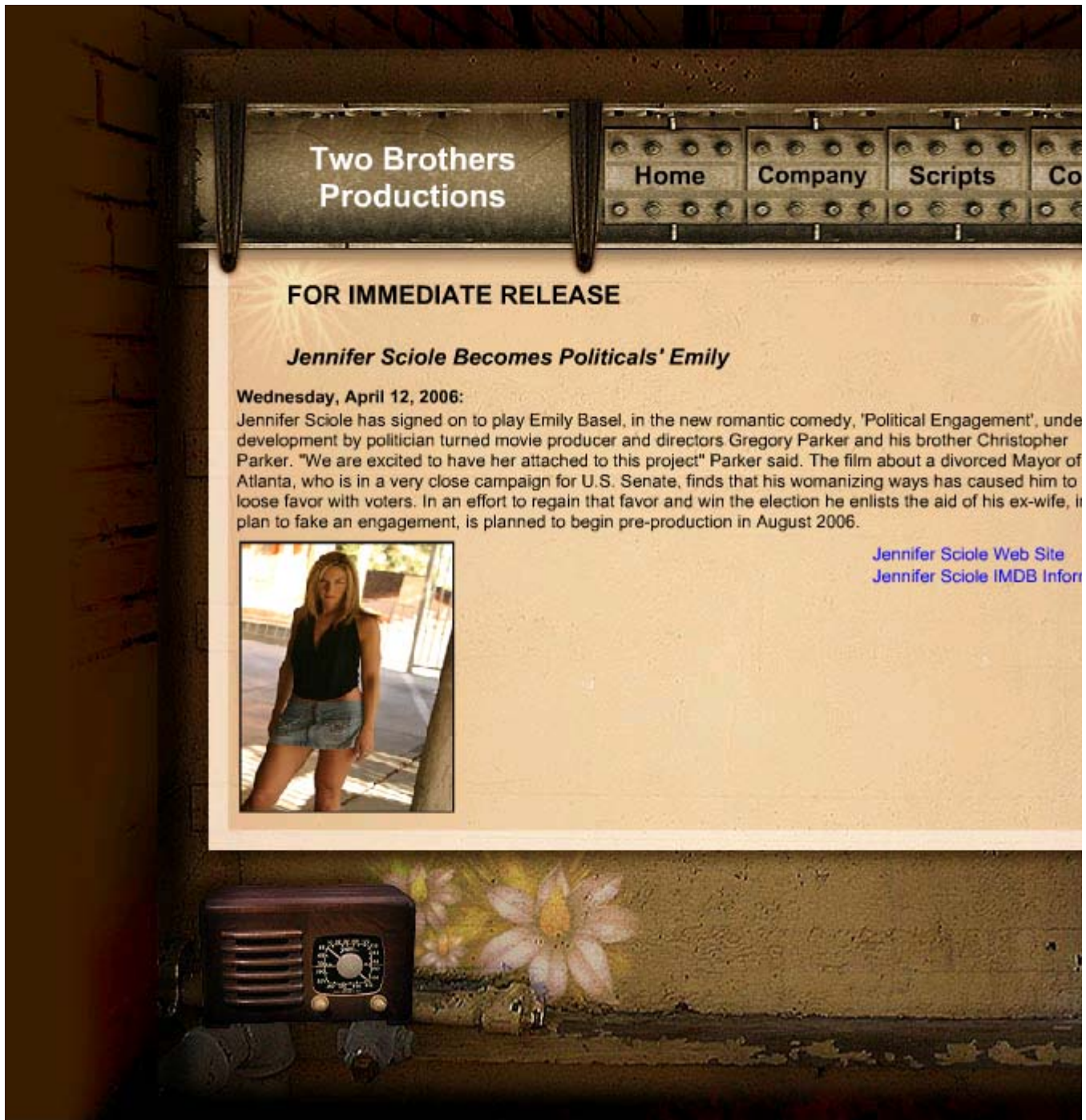
Sincerely,



Darren VanCleave  
President/CEO  
**Result Talent Group**  
Los Angeles, CA  
(310)498-5009  
darren@rtgtalent.com  
[www.rtgtalent.com](http://www.rtgtalent.com)



**Result Talent Group**  
A Division of Result Technology Group, LLC.  
A VanCleave Company



Two Brothers  
Productions

Home

Company

Scripts

Co

FOR IMMEDIATE RELEASE

***Jennifer Sciole Becomes Political's Emily***

Wednesday, April 12, 2006:

Jennifer Sciole has signed on to play Emily Basel, in the new romantic comedy, 'Political Engagement', under development by politician turned movie producer and directors Gregory Parker and his brother Christopher Parker. "We are excited to have her attached to this project!" Parker said. The film about a divorced Mayor of Atlanta, who is in a very close campaign for U.S. Senate, finds that his womanizing ways has caused him to lose favor with voters. In an effort to regain that favor and win the election he enlists the aid of his ex-wife, who plans to fake an engagement, is planned to begin pre-production in August 2006.



[Jennifer Sciole Web Site](#)  
[Jennifer Sciole IMDB Inform](#)

## Actress Jennifer Sciole Inked for Major Role in 'Political Engagement'



1 hour, 50 minutes ago

Los Angeles, CA (PRWEB) April 19, 2006 -- Up-and-coming film and television star Jennifer Sciole has signed on to play Emily Basel, in the new romantic comedy feature film "Political Engagement," under development by politician turned movie producer and director Gregory Parker, and his brother Christopher Parker of Two Brothers Productions, LLC. "We are excited to have her attached to this project," Parker said.

She has been in several motion picture and television productions over the past year.

In addition, Sciole is signed to be a presenter/trophy model at the 10th Annual PRISM Awards which will air on FX Network April 30th.

"Political Engagement" is about a divorced Mayor of Atlanta, who is in a very close campaign for U.S. Senate. He finds that his womanizing ways has caused him to lose favor with voters. In an effort to regain that favor and win the election, he enlists the aid of his ex-wife and plans a fake engagement. The pre-production is planned for August 2006 with production beginning in late 2006 or early 2007. The theatrical release is planned to coincide with the Presidential Election of 2008. To provide a twist, Two Brothers Productions will actually run a candidate in the election under the pseudo name, Chris Palmer, the lead character in the film, which will blur the line between reality and fiction. Gabrielle Union and Kellita Smith are are being sought for the female lead, Catherine Mason. The producers wish list for the male lead, Jeff Palmer, includes Taye Diggs, LL Cool J, Jamie Foxx, Morris Chestnut, Shawn Wayans, Shemar Moore, and Anthony Anderson.

Other actors on the wish/consideration list are Bow Wow as Jason Palmer and Josh Lucas as Tex Jones, Beyonce Knowles, Jonathan Silverman, Jennifer Esposito and Keshia Knight Pulliam.

### RESULT TALENT GROUP

Darren Vancleave

310-498-5009

E-mail Information [Trackback URL](#):

<http://prweb.com/pingpr.php/Q291cC1NYWduLUhhbGYtSG9yci1IYWxmLVplcm8=>

---

Copyright © 2006 Yahoo! Inc. All rights reserved.

[Questions or Comments](#)

[Privacy Policy](#) - [Terms of Service](#) - [Copyright/IP Policy](#) - [Ad Feedback](#)

## **Actress Jennifer Sciole Inked for Major Role in 'Political Engagement'**

*Up-and-Coming film and television star, Jennifer Sciole, signed with Two Brothers Productions for the role of Emily Basel in their upcoming feature film, "Political Engagement."*

Los Angeles, CA (PRWEB) April 19, 2006 -- Up-and-coming film and television star Jennifer Sciole has signed on to play Emily Basel, in the new romantic comedy feature film "Political Engagement," under development by politician turned movie producer and director Gregory Parker, and his brother Christopher Parker of Two Brothers Productions, LLC. "We are excited to have her attached to this project," Parker said.

She has been in several motion picture and television productions over the past year. In addition, Sciole is signed to be a presenter/trophy model at the 10th Annual PRISM Awards which will air on FX Network April 30th.

"Political Engagement" is about a divorced Mayor of Atlanta, who is in a very close campaign for U.S. Senate. He finds that his womanizing ways has caused him to lose favor with voters. In an effort to regain that favor and win the election, he enlists the aid of his ex-wife and plans a fake engagement. The pre-production is planned for August 2006 with production beginning in late 2006 or early 2007. The theatrical release is planned to coincide with the Presidential Election of 2008. To provide a twist, Two Brothers Productions will actually run a candidate in the election under the pseudo name, Chris Palmer, the lead character in the film, which will blur the line between reality and fiction.

## FOR IMMEDIATE RELEASE

Los Angeles, CA, Tuesday, April 18, 2006: Up-and-coming film and television star **Jennifer Sciole** has signed on to play Emily Basel, in the new romantic comedy feature film "Political Engagement," under development by politician turned movie producer and director Gregory Parker, and his brother Christopher Parker of Two Brothers Productions, LLC. "We are excited to have her attached to this project," Parker said.

She has been in several motion picture and television productions over the past year.

In addition, Sciole is signed to be a presenter/trophy model at the 10<sup>th</sup> Annual PRISM Awards which will air on FX Network April 30<sup>th</sup>.

"Political Engagement" is about a divorced Mayor of Atlanta, who is in a very close campaign for U.S. Senate. He finds that his womanizing ways has caused him to lose favor with voters. In an effort to regain that favor and win the election, he enlists the aid of his ex-wife and plans a fake engagement. The pre-production is planned for August 2006 with production beginning in late 2006 or early 2007. The theatrical release is planned to coincide with the Presidential Election of 2008. To provide a twist, Two Brothers Productions will actually run a candidate in the election under the pseudo name, Chris Palmer, the lead character in the film, which will blur the line between reality and fiction.

### Links:

Breakdown Services Profile:

<http://resumes.breakdownexpress.com/316055-808053>

IMDB Profile:

<http://www.imdb.com/name/nm1043468/>

Jennifer Sciole Reel:

[http://www.actoreels.com/jennifer\\_sciole](http://www.actoreels.com/jennifer_sciole)

Result Talent Group:

<http://www.rtgtalent.com>

Headlines/Previous Press Release:

<http://www.rtgtalent.com/ResultTalentGroupCompanyandEntertainmentIndustryHeadlines.htm>

Two Brothers Productions- "Political Engagement"

<http://www.twobrothersproductions.com/2bro/>

Jennifer Sciole on MySpace:

<http://www.myspace.com/jenniferacting>

Jennifer Sciole MySpace Blog:

<http://blog.myspace.com/jenniferacting>

## FOR IMMEDIATE RELEASE

Los Angeles, CA, Monday, April 17, 2006: Up-and-coming actress **Jennifer Sciole** has signed on to play Emily Basel, in the new romantic comedy feature film "Political Engagement," under development by politician turned movie producer and director Gregory Parker, and his brother Christopher Parker of Two Brothers Productions, LLC. "We are excited to have her attached to this project," Parker said.

She has been in several motion picture and television productions over the past year. In addition, Sciole is signed to be a presenter/trophy model at the 10<sup>th</sup> Annual PRISM Awards which will air on FX Network April 30th.

"Political Engagement" is about a divorced Mayor of Atlanta, who is in a very close campaign for U.S. Senate. He finds that his womanizing ways has caused him to lose favor with voters. In an effort to regain that favor and win the election, he enlists the aid of his ex-wife and plans a fake engagement. The pre-production is planned for August 2006 with production beginning in late 2006 or early 2007. The theatrical release is planned to coincide with the Presidential Election of 2008. To provide a twist, Two Brothers Productions will actually run a candidate in the election under the pseudo name, Chris Palmer, the lead character in the film, which will blur the line between reality and fiction.

Links:

<http://www.jennifersciole.com>

<http://www.imdb.com/name/nm1043468/>

<http://resumes.breakdownexpress.com/316055-808053>

<http://www.twobrothersproductions.com>

<http://www.rtgtalent.com/ResultTalentGroupCompanyandEntertainmentIndustryHeadlines.htm>

Categories: [TV News](#)

- ▣ [USA Today Travel News](#)
- ▣ [Warner Bros. Music](#)
- ▣ [iTunes](#)

- ▣ [NEWS FEEDS](#)
- ▣ [SPORTS](#)
- ▣ [TECHNOLOGY](#)
- ▶ [TRAVEL](#)
- ▣ [TV](#)
- ▶ [journalists](#)

---

## Who's new

- [greaseman](#)
- [henry](#)
- [stormy619](#)
- [johnette](#)
- [Carolientje](#)

---

## Who's online

There are currently 0 users and 6 guests online.

---

## Films This Week

[more](#)

---

## Celebrity Birthdays

[more](#)

---

## Chatbox

The chatbox is empty

---

## Celebrity News

[more](#)

---

## Movie Box Office

[more](#)

---

## Movie Reviews

[more](#)

**April 19, 2006**

05:15

### **Internationally Acclaimed Voice Talent and BBC Hudson, Presents Effective Communication Sem International Podcasting Expo, April 21 - 23, 20**

Steve Hudson, the internationally acclaimed Voice Talent, BBC Trainee Master, has developed the PSR Method, the only professional technique developed for verbal communication. He will be presenting a seminar "People Remember What You Say: Effective Verbal Communication" at the International Podcasting Expo, April 21 - 23, 2006. (PRWEB Apr 19, 2006) Trackback URI: <http://www.prweb.com/chachingpr.php/U3VtbS1Ib3JyLUNvdXAtSG9y>

Categories: [TV News](#)

05:15

### **Pileated Pictures a Mane Solution for PBS' "Betw**

Pileated Pictures has completed production on three animated shorts Award®-winning PBS series "Between The Lions," as well as nine new shows. (PRWEB Apr 19, 2006) Trackback URI: <http://www.prweb.com/dingpr.php/Q3Jhcy1IYWxmLUNvdXAtSG9yci1>

Categories: [TV News](#)

05:15

### **Actress Jennifer Sciole Inked for Major Role in ' Engagement'**

Up-and-Coming film and television star, Jennifer Sciole, signed with T Productions for the role of Emily Basel in their upcoming feature film, "Engagement." (PRWEB Apr 19, 2006) Trackback URI: <http://www.prweb.com/dingpr.php/Q291cC1NYWduLUhbbGYtSG9yci1>

Categories: [TV News](#)

05:15

### **New Book Reveals the Shocking Truth About Television Offers a Ray of Hope to Couch Potatoes Across t**

According to a recent survey, the average American spends over 4.5 hours watching television. Katherine Westphal has written two companion books about the dangers of watching too much TV and to help them overcome it. (PRWEB Apr 19, 2006) Trackback URI: <http://www.prweb.com/zingpr.php/RmFsdS1aZXRhLVNpbmctSG9yci1>

Categories: [TV News](#)

05:15

### **Hollywood Urban Gospel Film Craze Gets 'A Taste' Former Child Star Turned Director**

Shavar Ross goes behind the lens for Tri Seven Entertainment debut "A Taste" (2006) Trackback URI: <http://www.prweb.com/zingpr.php/U3VtbS1TcXVhLVBpZ2ctSG9yci1I>

Categories: [TV News](#)

05:15

### **When Bad Designs Happen to Good People**

Designer Frank Fontana rescues homeowners from bad taste -- Stars

## **Actress Jennifer Sciole Inked for Major Role in 'Political Engagement'**

*Up-and-Coming film and television star, Jennifer Sciole, signed with Two Brothers Productions for the role of Emily Basel in their upcoming feature film, "Political Engagement."*

Los Angeles, CA (PRWEB) April 19, 2006 -- Up-and-coming film and television star Jennifer Sciole has signed on to play Emily Basel, in the new romantic comedy feature film "Political Engagement," under development by politician turned movie producer and director Gregory Parker, and his brother Christopher Parker of Two Brothers Productions, LLC. "We are excited to have her attached to this project," Parker said.

She has been in several motion picture and television productions over the past year. In addition, Sciole is signed to be a presenter/trophy model at the 10th Annual PRISM Awards which will air on FX Network April 30th.

"Political Engagement" is about a divorced Mayor of Atlanta, who is in a very close campaign for U.S. Senate. He finds that his womanizing ways has caused him to lose favor with voters. In an effort to regain that favor and win the election, he enlists the aid of his ex-wife and plans a fake engagement. The pre-production is planned for August 2006 with production beginning in late 2006 or early 2007. The theatrical release is planned to coincide with the Presidential Election of 2008. To provide a twist, Two Brothers Productions will actually run a candidate in the election under the pseudo name, Chris Palmer, the lead character in the film, which will blur the line between reality and fiction.

[HOME](#)[ARTICLES](#)[NEWS](#)[CONTESTS](#)[EVENTS](#)[JOBS](#)[HIRE A WRITER](#)

**Film Scripts** - Discounted movie production scripts, complete with production notes, script-to-screen changes, storyboard sequences, and director's commentary.

sponsor ad | [view all ads](#)

## Post details: Actress Jennifer Sciole Inked for Major Role in 'Political Engagement'

### 04/21/06

🕒 03:25:59 pm, Categories: [Filmmaking](#), 382 words 

### [Actress Jennifer Sciole Inked for Major Role in 'Political Engagement'](#)

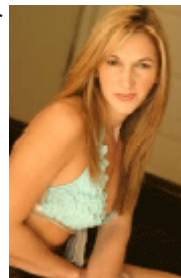
reported by [Tanner Shorer](#), [CyberScreenwriter.com](#)



Up-and-coming film and television star **Jennifer Sciole** has signed on to play Emily Basel, in the new romantic comedy feature film **"Political Engagement,"** under development by politician turned movie producer and director **Gregory Parker**, and his brother **Christopher Parker** of Two Brothers Productions, LLC.

"We are excited to have her attached to this project," Parker said. She has been in several motion picture and television productions over the past year. In addition, Sciole is signed

Sciole is signed to be a presenter/trophy model at the 10th Annual PRISM Awards which will air on FX Network.



"Political Engagement" is about a divorced Mayor of Atlanta, who is in a very close campaign for U.S. Senate. He finds that his womanizing ways has caused him to lose favor with voters. In an effort to regain that favor and win the election, he enlists the aid of his ex-wife and plans a fake engagement.

The pre-production is planned for August 2006 with production beginning in late 2006 or early 2007. The theatrical release is planned to coincide with the Presidential Election of 2008. To provide a twist, Two Brothers Productions will actually run a candidate in the election under the pseudo

## Cyber Screenwriter . co

Your source for screenwriting filmmaking, and entertainment

### **Discounted Screenwriting B**

Discounted books on screenwriting by popular authors (Syd Field, Rol McKee). Learn the craft and buy books of screenwriting and filmmaking

sponsor ad | [view all ads](#)

## Categories

[Cyber Screenwriter . co](#)

[SCREENWRITING ARTI](#)

- [Articles](#) (8)

[SCREENWRITING NEW](#)

- [Screenwriting News](#) (0)
- [Distribution Deals](#) (0)
- [Entertainment New](#) (0)
- [Filmmaking](#) (17)
- [Grants](#) (1)
- [Resources](#) (12)
- [Script Awards](#) (4)
- [Script Sales](#) (9)

[Screenwriting Contests](#)

[Screenwriting Events](#)

[Screenwriting Jobs](#)

[HIRE A WRITER](#)